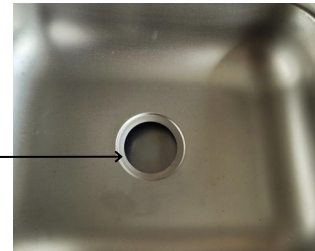


## Easy step-by-step installation:



### 1. Remove Existing Drain & Plumbing

Clear sink area and remove any previous plumbing like the sink drain or a garbage disposal (if converting). Clean all sink surface areas, especially around the rim of the sink drain opening (both top & bottom side) for best results.



### 2. Apply Top Sink Gasket

On top sink drain opening, apply the (1) rubber gasket with peel off adhesive side. Gasket is a “no putty” alternative to plumber’s putty (if plumber’s putty is still preferred, use for this step). Place the gasket with adhesive side down, pressing evenly in the drain opening to secure all around.



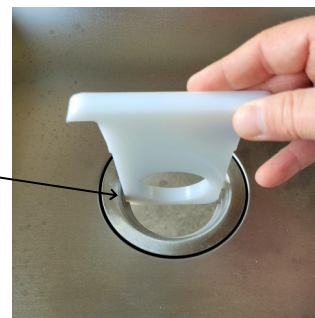
### 3. Place Sink Flange in Drain Opening

Next, place the (1) stainless steel sink flange, supplied, over gasket in the sink drain opening. The openings in the flange rim can be horizontal across, as pictured. Press the flange firmly down onto the gasket & secure without twisting.



### 4. Insert Install Tool to Steady Flange

The ScrapDrain kit comes complete with a custom tool. It helps to secure the sink drain flange from underneath the drain opening. From the top side, insert the tool into the side openings of the drain flange. Push down until the top “tee” of the tool bottoms out into the flange leaving the majority of the tool hanging through to bottom side.



# ScrapDrain

## 5. Under Sink - Pull Down & Tighten Nut

Hold the install tool with the circular grab opening and pull downward to hold the top sink flange secure in place. Then apply the (1) rubber gasket followed by the (1) cardboard gasket up onto the threads of the sink flange. Next, slip on the mounting nut & spin onto the flange threads, clock-wise to the right. Hold install tool, tighten nut until firmly secure.



## 6. Attach ScrapDrain Housing & Tighten

After the mounting nut is securely fastened, pull out the install tool out from the top and place aside. Then spin the ScrapDrain housing into the bottom half of the mounted nut. Turn the housing up into the nut until hand tight until the housing squeezes the O-ring that prevents leaking.



## 7. Firmly Tighten & Secure Adapter

Once the ScrapDrain housing is secure the bottom outlet plumbing adapter can then be affixed with solvent cement. The fitting supplied is a 1-1/2 in. PVC DWV Street Spigot x FIPT Female Adapter. Another fitting can be used, if the connecting plumbing requires (one in kit is most common).

*\*The plumbing hereafter is the choice of the DIY installer or installing plumber. Decisions made are dependent on the remaining connections and outlet pipe.*



## 8. Insert Strainer Basket & Strainer Lid

ScrapDrain has a perforated stainless steel strainer basket to capture the food solids as standard (a fine mesh strainer is available for specific areas like coffee waste sinks). Insert the strainer basket from the top where it resides on the rim of the sink flange (empty the strainer basket regularly to avoid odors).

The top strainer lid has larger holes to let small debris in without lifting up. The lid strainer can be removed to allow lots of solids debris to flow readily into the catch basket.



Please enjoy your **ScrapDrain** SINK SOLIDS SEPARATOR. We hope it exceeds your expectations over many years of use.

*~Thank you*