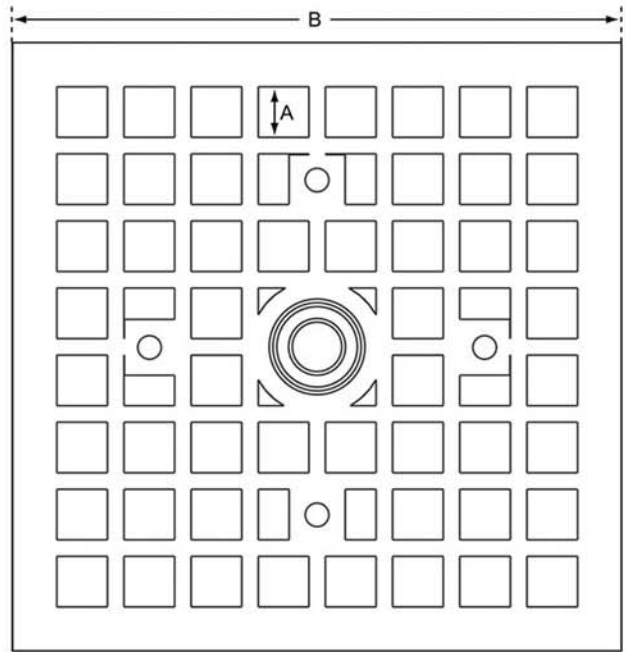
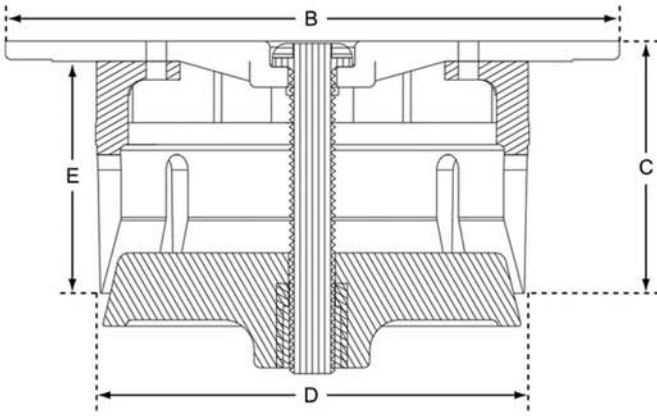


GUARDIAN FLOOR DRAIN-LOCK™ NICKEL-BRONZE SQUARE

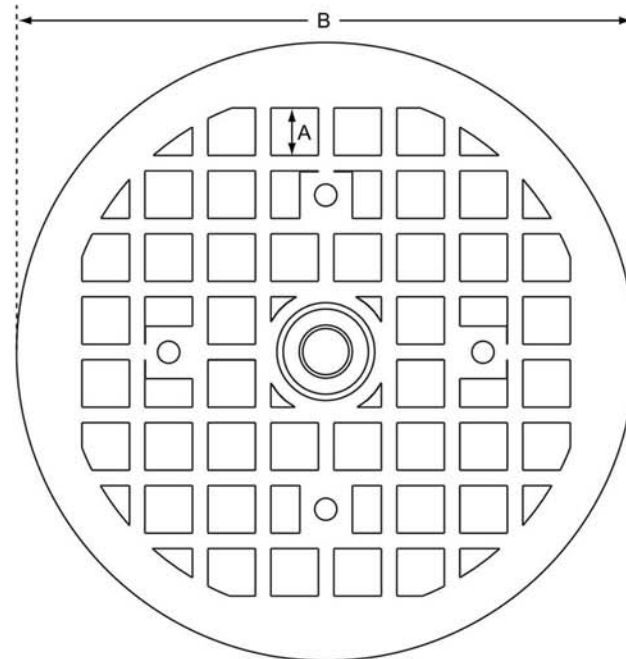
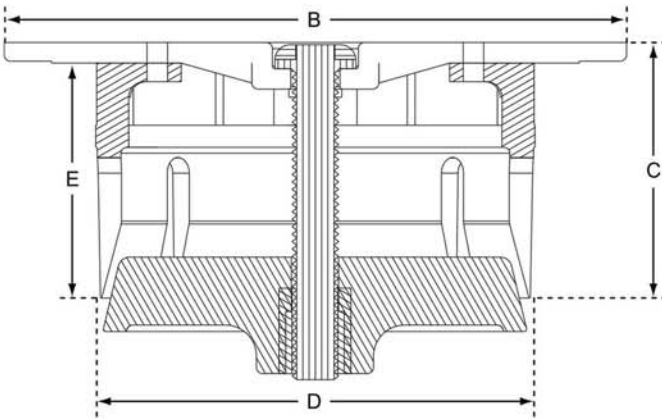


APPLICATION: For use in floor drains in food processing plants, restaurants, factories, restrooms, walkways, etc.

SPECIFICATIONS: Glass filled polypropylene molded body with a nickel-bronze strainer top plate, and stainless tamperproof #45 Torx bolt.

| TYPE NO. | DRAIN OPENING | A | B | C | D | E | Wt. |
|----------------|---------------|-------|-------|-------|-------|-------|------|
| GDL-SFD-3500-S | 3.5" | 0.375 | 4.575 | 2.125 | 3.500 | 1.875 | 333g |
| GDL-SFD-3500-J | 3.5" | 0.375 | 4.520 | 2.125 | 3.500 | 1.875 | 333g |
| GDL-SFD-3500-Z | 3.5" | 0.375 | 4.680 | 2.125 | 3.500 | 1.875 | 333g |

GUARDIAN FLOOR DRAIN-LOCK™ NICKEL-BRONZE ROUND



APPLICATION: For use in floor drains in food processing plants, restaurants, factories, restrooms, walkways, etc.

SPECIFICATIONS: Glass filled polypropylene molded body with a nickel-bronze strainer top plate, and stainless tamperproof #45 Torx bolt.

| TYPE NO. | DRAIN OPENING | A | B | C | D | E | Wt. |
|----------------|---------------|-------|-------|-------|-------|-------|------|
| GDL-RFD-3500-S | 3.5" | 0.375 | 4.700 | 2.125 | 3.500 | 1.875 | 310g |
| GDL-RFD-3500-J | 3.5" | 0.375 | 4.650 | 2.125 | 3.500 | 1.875 | 310g |
| GDL-RFD-3500-Z | 3.5" | 0.375 | 5.000 | 2.125 | 3.500 | 1.875 | 310g |



GUARDIAN DRAIN-LOCK

**Guardian Drain-Lock™
for Floor Drains**

Installation Guide

Tools Needed

- ✓ Rag
- ✓ 3/8" Ratchet
- ✓ 3/8" Ratchet Extension
- ✓ Tamperproof Torx Key #45

Determining Size

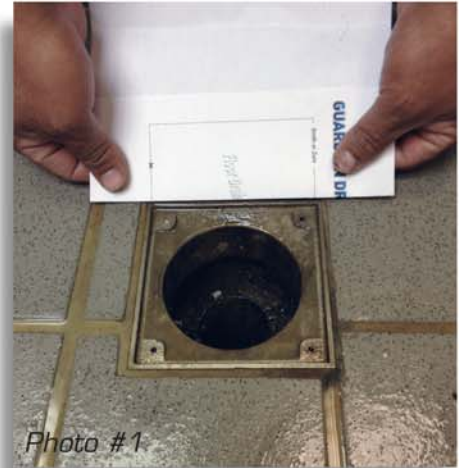
Determine the type of Guardian D-Lock™ needed to properly match the floor drain desired to retrofit (Photo #1). The 3" floor drain manufactured by Josam, JR Smith and Zurn can be retrofitted with Guardian D-Lock™ Floor Drain model. If a size cannot be determined using the template guide on the reverse side, contact Drain-Net at 908-236-0277 for further assistance.

How to Install

- ▶ Remove damaged grate from floor drain
- ▶ Clean floor drain of debris and grime within the throat of drain. (Photo #2)
- ▶ Assemble ratchet, ratchet extension and Tamperproof Torx Key #45 key.
- ▶ Place Guardian D-Lock™ in floor drain
- ▶ While holding down the Guardian D-Lock™ in place with one hand, insert the assembled ratchet with Torx #45 key into the tamperproof bolt and tighten (clockwise) until firmly secured. (Photo #3) Do not over tighten, use judgment.

Monitoring the Drain-lock

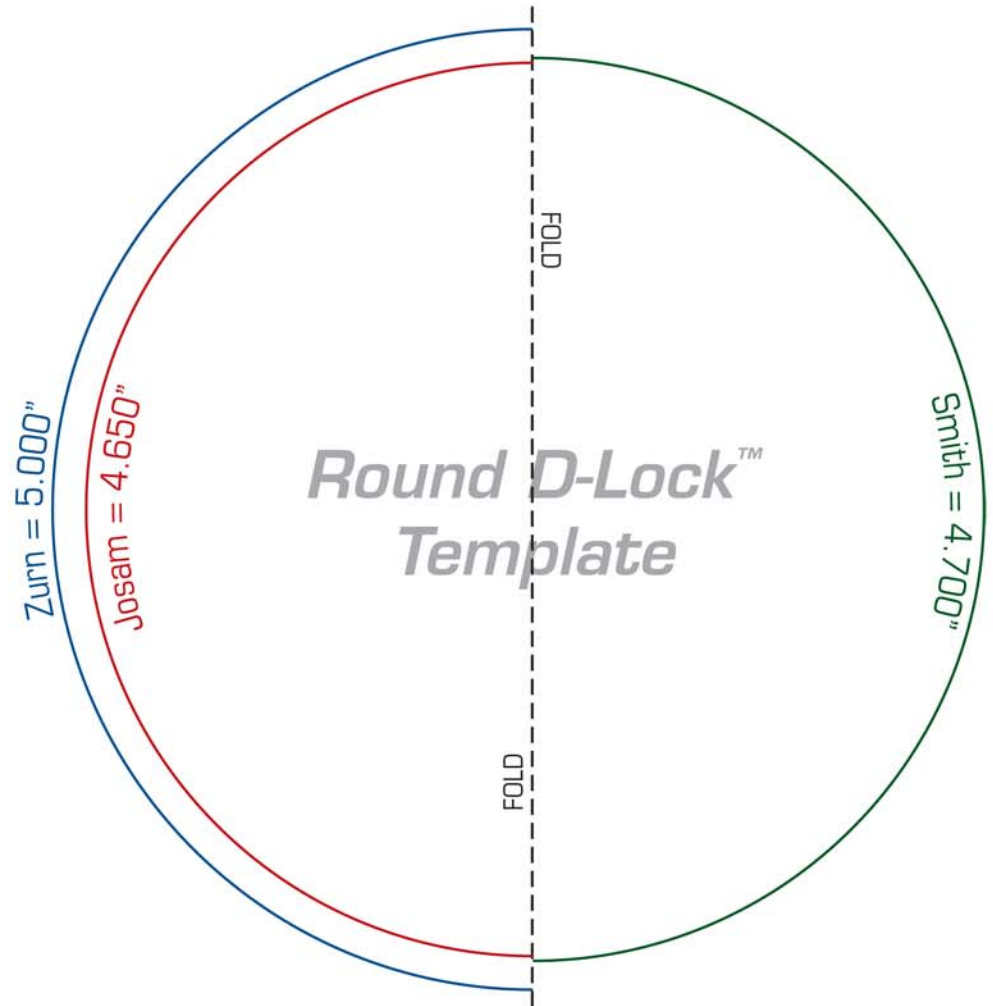
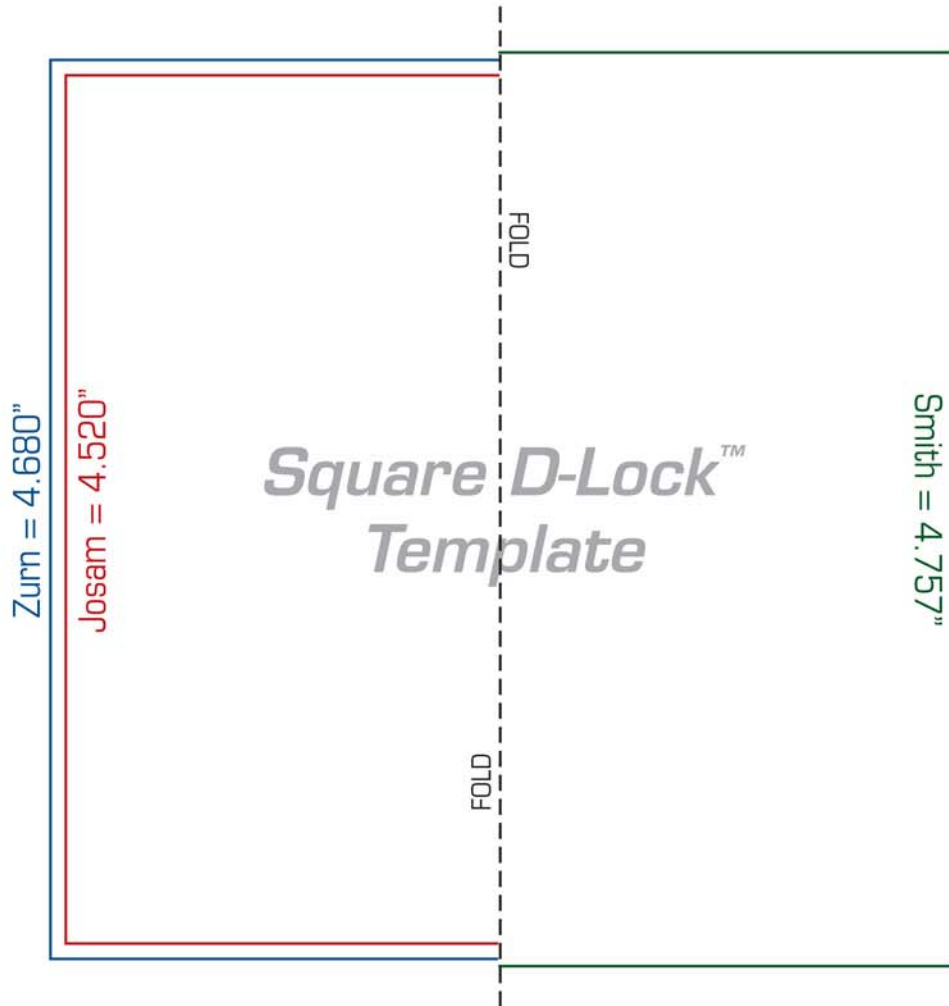
Once the Guardian D-Lock™ is properly secured and locked, there should be no need to remove other than for sanitation purposes. As needed, use soapy hot water and a plastic brush to clean the Guardian D-Lock™ of any built-up of grime. If the Guardian D-Lock™ is to be removed for cleaning, wash it by hand at the nearest dump sink or run it through a dish machine. Before re-installing make certain all parts are in good condition.





GUARDIAN DRAIN-LOCK™

Floor Drain Templates



IMPORTANT: In printing this Template Guide to your inkjet or laser printer, it may have been reduced or enlarged to fit within the print area of your printer. Please verify the accuracy of your print by comparing this ruler with an actual ruler.