

Drain-Net Grease Management

DrainNet
TECHNOLOGIES

Solids Interceptors



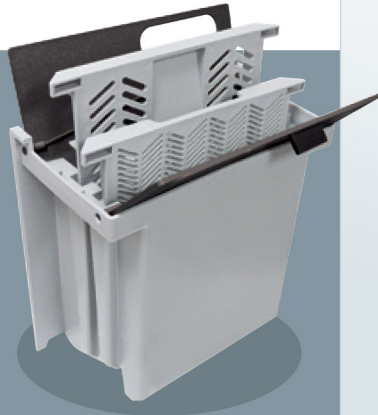
Available in 2", 3" & 4" connection sizes and may accommodate flow rates up to 125 GPM.

The management of solids and debris entering the drain - and ultimately the grease interceptor - is equally as important to manage as the grease itself. Large quantities of solids reduce the working volume of the grease interceptor, significantly impairing performance.

Additionally, debris entering the drain will increase the risk of blockage at the flow control device which could result in costly clogs and back-ups. The Drain-Net Solids interceptors offer solutions for small to medium output applications; using the benefits of the design concept with different internal components to provide proactive prevention of solids-related issues.

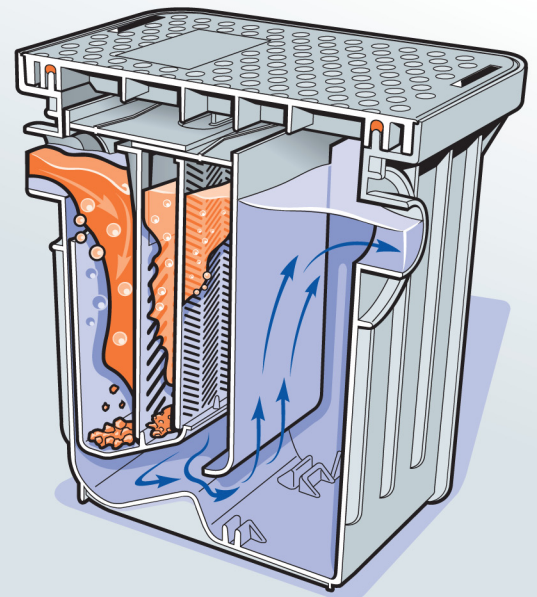
The Solids Basket

- Compatible with full height interceptors 15gpm to 50gpm
- Easy to remove and maintain
- Removable dual screen filtration
- Integrated lifting handles
- Enhanced grease interceptor performance



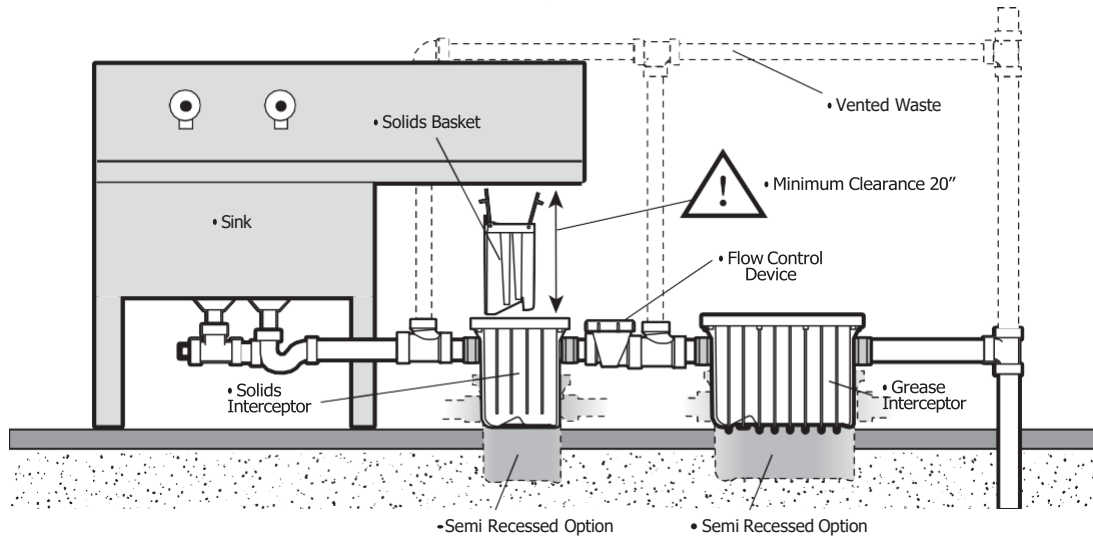
Common uses:

- Food solids
- Art room waste
- Laundry lint
- Grit and sand
- Hair



DRAIN-NET SOLIDS INTERCEPTOR INSTALLATION INSTRUCTIONS

TYPICAL ON FLOOR/ SEMI-RECESSED



NOTE: Solids Interceptor must be installed before flow control device.

SOLIDS BASKET ACCESSORY INSTALLATION INSTRUCTIONS

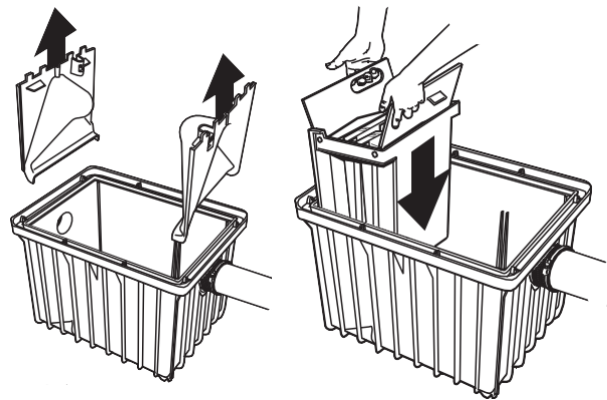
The Solids Basket Accessory is designed to be able to replace the inlet baffle of your grease interceptor. It can be fitted to any full height model from 15 GPM to 50 GPM.

1. REMOVE BAFFLES

Remove the inlet and outlet baffles from the interceptor by pulling vertically on the lifting locations.

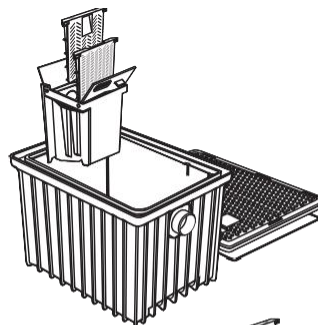
2. INSTALL SOLIDS BASKET

Insert the solids basket accessory into the inlet location pushing it all the way down until it bottoms out.



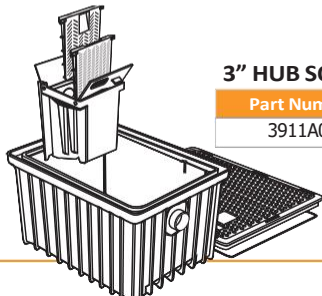
2" HUB SOLIDS INTERCEPTOR

Part Number	Max Flow Rate
3911A02	25 GPM



4" HUB SOLIDS INTERCEPTOR

Part Number	Max Flow Rate
4011A04	125 GPM



3" HUB SOLIDS INTERCEPTOR

Part Number	Max Flow Rate
3911A03	60 GPM



SOLIDS BASKET ACCESSORY

Part Number	Connection Type
3911A-1	N/A

SECTION FOUR: INSTALLATION

INSTALLATION OVERVIEW

Always follow the complete installation instructions provided in this manual. **Failure to comply with handling, storage and installation instructions may cause system failure resulting in damage to property or networking municipal systems.**



WARNING

**DO NOT PRESSURE TEST.
RISK OF SERIOUS INJURY**



WARNING

GREASE INTERCEPTORS ARE HAZARDOUS ENVIRONMENTS AND MUST NEVER BE LEFT UNCOVERED AND UNATTENDED, EVEN DURING MAINTENANCE.

- All access covers **MUST** be fully and completely secured
- All required bolts **MUST** at all times be in place and well tightened
- Missing bolts **MUST** be reported to management and replaced immediately
- Covers **MUST** meet the required load rating for the application (see the Technical Information section)
- Do **NOT** use alternate covers

As a plumbing appurtenance, the grease interceptor **MUST** be isolated from the drainage system in the event that final drain testing or other system pressure testing is required. **DO NOT** under any circumstances subject the interceptor to pressure test (air, water or otherwise). This action will result in damage to the unit, invalidate the warranty and could cause serious bodily injury.

Proper installation of a grease interceptor is critical to its effectiveness. All installation recommendations are subject to the approval of the local Authority Having Jurisdiction. The grease interceptor may be installed on the floor, partially in the floor or in ground to best suit the situation.

Placement should allow the cover to be easily removed for cleaning and maintenance. For smaller models, a minimum clearance is required above the cover of the grease interceptor to allow removal of the internal baffles for a complete cleanout. With the cover removed, all internal surfaces should be visible. Models up to 50 gpm have specific minimum clearance requirements as outlined in the chart below.

Clearance required	Units
15"	7/10/15/20/25/35 GPM
6"	25 GPM LO-PRO
21"	50GPM

The grease interceptor is marked with "IN" and "OUT" above the connections to ensure the grease interceptor is installed in the right direction.

The grease interceptor should be installed as close as possible to the drain of the fixture(s) being served. Piping between the grease source and the interceptor is unprotected and a potential source for grease build-up. Installations requiring long runs of pipe to reach the interceptor will increase the probability of the pipeline becoming clogged with grease before reaching the grease interceptor. Grease waste lines should be piped at a minimum slope of 1/4 inch per foot (6mm per 304mm) to maintain flow in the drain line. Pipe runs greater than 25ft from the fixture to the interceptor should be aggressively sloped and/or heat traced to prevent grease from coagulating in the line.

Consult with the local Authority Having Jurisdiction for additional details regarding dishwasher and food grinders.