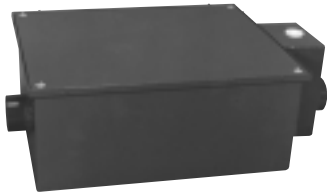
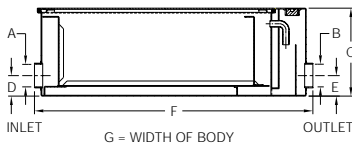


JONESPEC® GREASE INTERCEPTORS



LOW PROFILE GREASE INTERCEPTOR

- Recommended for removing and retaining grease from wastewater in kitchen and restaurant areas where food is prepared.
- Designed to be installed under the sink or in an area where space is limited.
- Grease trap is corrosion-resistant coated fabricated steel with no-hub connections, flow diffusing baffle, integral trap, and vented inlet flow control device.



Model Number	Flow Rate G.P.M. / [L/M]	Dimensions in Inches [mm]						
		A	B	C	D	E	F	G
GT-2701-20	20 [76]	3" [76]	3" [76]	10" [254]	3-1/8" [79]	3-1/8" [79]	31" [787]	21-1/8" [537]
GT-2701-35	35 [132]	4" [102]	4" [102]	10-3/4" [273]	3-1/8" [79]	3-1/8" [79]	42-1/8" [1070]	29-3/8" [746]
GT-2701-50	50 [189]	4" [102]	4" [102]	16" [406]	10" [254]	10" [254]	49-1/2" [1257]	29-3/8" [746]